

SARCOIDOSIS, INORGANIC DUST EXPOSURE AND CONTENT OF BRONCHOALVEOLAR LAVAGE FLUID: THE MINASARC PILOT STUDY

Mickael Catinon^{1,2,3*}, Catherine Cavalin^{2,4,5}, Cécile Chemarin^{1,3}, Stéphane Rio¹, Elisabeth Roux¹, Mathieu Pecquet¹, Anne-Sophie Blanchet¹, Sylvie Vuillermoz¹, Christophe Pison⁶, François Arbib⁶, Vincent Bonnetterre⁷, Dominique Valeyre⁸, Olivia Freynet⁸, Jean-François Mornex^{9,10}, Yves Pacheco¹¹, Nathalie Freymond¹¹, Françoise Thivolet¹², Marianne Kambouchner¹³, Jean-François Bernaudin^{8,14}, Audrey Nathalizio¹⁵, Pierre Pradat¹⁶, Paul-André Rosental⁶, Michel Vincent^{1,2,3}

¹ Pneumology Unit and Laboratory of Mineral Pathologies, Saint Joseph and Saint Luc Hospital, Lyon, France; ² Centre for European Studies, ERC Silicosis Project, Sciences Po, Paris, France; ³ Minapath Développement, Insavalor CS: 52132 Villeurbanne, France; ⁴ Laboratory for Interdisciplinary Evaluation of Public Policies, Sciences-Po, Paris, France; ⁵ Centre for Employment and Labour Studies, Noisy-le-Grand, France; ⁶ Pneumology Department, CHU-Grenoble-Alpes (Grenoble teaching hospital), Grenoble, France; ⁷ Occupational and Environmental Health Department, CHU Grenoble-Alpes (Grenoble teaching hospital), Grenoble, France; ⁸ Pneumology Unit, Avicenne Hospital, Bobigny, France; ⁹ Pneumology Unit, Louis Pradel Hospital, Lyon, France; ¹⁰ Université de Lyon, INRA, UMR754, 69007 Lyon, France; ¹¹ Pneumology Unit, Lyon-Sud Hospital, France; ¹² Department of Cytology and Pathology, Pôle Est, Hospices Civils de Lyon, France; ¹³ Department of Cytology and Pathology, Avicenne Hospital, Bobigny, France; ¹⁴ UPMC Sorbonne University, Paris, France; ¹⁵ DermScan Society, Villeurbanne, France; ¹⁶ Centre for Clinical Research, Croix-Rousse Hospital, Hospices Civils de Lyon, Lyon, France

ABSTRACT. Inhalation of mineral dust was suggested to contribute to sarcoidosis. We compared the mineral exposure of 20 sarcoidosis and 20 matched healthy subjects. Bronchoalveolar lavage (BAL) samples were treated by digestion-filtration and analyzed by transmission electron microscopy. The chemical composition of inorganic particles was determined by energy-dispersive X-ray (EDX) spectroscopy. Dust exposure was also assessed by a specific questionnaire. Eight sarcoidosis patients and five healthy volunteers had a high dust load in their BAL. No significant difference was observed between the overall inorganic particle load of each group while a significant higher load for steel was observed in sarcoidosis patients ($p=0.029$). Moreover, the building activity subscore was significantly higher in sarcoidosis patients ($p=0.018$). These results suggest that building work could be a risk factor for sarcoidosis which could be considered at least in some cases as a granulomatosis caused by airborne inorganic dust. The questionnaire should be validated in larger studies. (*Sarcoidosis Vasc Diffuse Lung Dis* 2018; 35: 327-332)

KEY WORDS: sarcoidosis, dust exposure, bronchoalveolar lavage

INTRODUCTION

Several epidemiological studies (1,2) and editorials (3,4) suggested that the inhalation of mineral

dust may contribute to sarcoidosis. Along with beryllium exposure, the 1999 statement of international experts on sarcoidosis mentioned aluminum, talc and zirconium as possible causes, but did not mention crystalline silica (5). Moreover, several studies (6,7) and the recent mini-epidemic among World Trade Center cleanup workers (8,9) suggest that the exposure to mineral dust can indeed cause sarcoidosis. Finally, a number of granulomatosis cases (with symptoms similar to those of sarcoidosis) have been attributed to exposure to metals, namely beryllium

Received: 29 January 2018

Accepted after revision: 31 May 2018

Correspondence: Mickael Catinon

MINAPATH Développement

56 Boulevard Niels Bohr, CEI2, CS : 52132

69603 Villeurbanne Cedex, France

Tel. +33 (0)6 37 39 97 47

E-mail: mcatinon@minapath.com

(10), titanium (11,12), aluminum (13), and steel (14).

In order to investigate the putative link between sarcoidosis and inorganic dusts, we conducted a pilot multicenter case-control study on 20 patients with sarcoidosis matched with 20 healthy volunteers on sex, age, and tobacco use.

METHODS

Sarcoidosis patients

Twenty patients with biopsy-proven granulomas were recruited from four centers. Inclusion criteria included: age 20-50 years, suspected sarcoidosis stage I-IV with no cause identified by basic questioning, and successful extraction of bronchoalveolar lavage (BAL) fluid using standard procedures.

Healthy subjects

Healthy subjects were recruited by DermScan (Lyon, France). Endoscopies and BALs were performed in the endoscopy unit of the Saint-Joseph Saint-Luc hospital (Lyon, France). Each sarcoidosis subject was matched with a healthy volunteer by age (± 10 years), sex, and smoking status. Pregnant women were excluded as were subjects with a psychiatric pathology.

Mineralogical analysis of BAL fluid

BAL samples were extracted following the procedure currently recommended in French hospitals as previously described (15). The mineralogical analysis was performed by transmission electron microscopy (TEM, Jeol 1400 EX, operated at 120 kV) on a device equipped with a CCD camera (Gatan Orius 600) and an X-ray emission detector (Jeol JED-2300). Samples were randomly assigned to one of two mineralogists specialized in environmental exposure. Nature of the mineral and metal particles was determined by X-ray emission spectroscopy. Exogenous compounds were counted and expressed as a number of particles per milliliter of BAL fluid. The sensitivity limit of this approach is 434/mL corresponding to the observation of a single particle by TEM.

The dust exposure questionnaire (Online resource 1)

The questionnaire was developed based on previous surveys of occupational exposure and carcinogenic risks (15,16). It quantifies and classifies a subject's mineral exposome. The categories account for professional (occupation, task, work sector etc.) and non-professional activities and for cumulative duration of exposure and the presence and effectiveness of any (individual or collective) protection device against dust.

All subjects were interviewed by telephone and by the same investigator (CCa). Answers to each question were scored from 0 to 5. The greater the number of exposures and their duration were and the more deficient the protection, the higher the score was (Figure 1).

In situ optical mineralogical analysis

Three expert pathologists (FT, MK, JFB) examined histological slides for each subject by optical microscopy and noted the presence or not of opaque (under natural light) or birefringent (under polarized light) particles in or outside the granulomas.

Statistical analysis

For quantitative variables, differences between groups were tested using non-parametric Mann-Whitney test. For qualitative variables, a Fisher exact test was used. A logistic regression analysis was conducted to identify factors potentially associated with presence of sarcoidosis. Results are presented as odds ratios (OR) together with their 95% confidence intervals (95%CI). A p value < 0.05 was considered as statistically significant. All analyses were performed using R (R Foundation for Statistical Computing, Vienna, Austria).

Ethical approval

This study was approved by the Research Ethics Committee of Lyon (approval No. 2013-050 B). All study participants provided written informed consent.

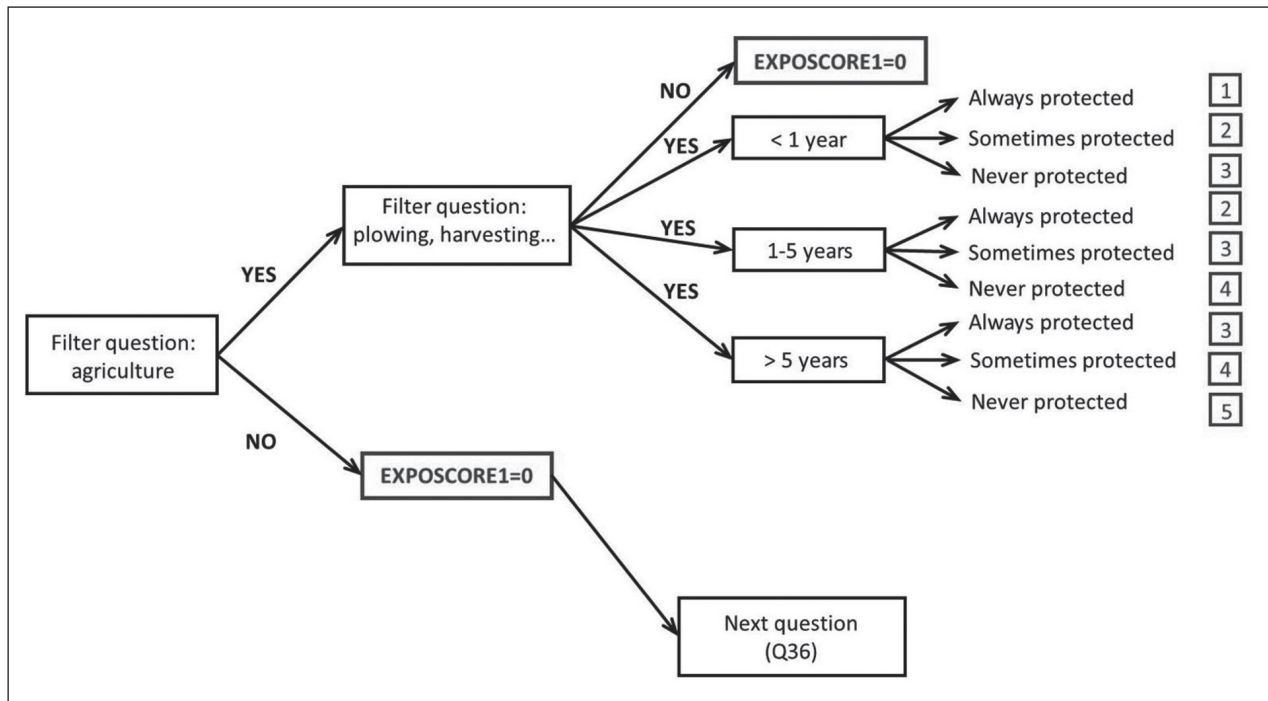


Fig. 1. Flow chart showing how the dust questionnaire was scored

RESULTS

Study population

Both groups consisted of 6 women and 14 men and mean age was 36 years (Table 1). Forty-five percent of sarcoidosis patients were of Western Europe origin *vs* 95% of healthy volunteers ($p=0.009$)

Mineral load

There was no significant difference between both groups in terms of mineral load, either overall, or considering each particle type separately, except a possible higher steel load among sarcoidosis patients ($p=0.029$; Table 1 and Figure 2) and a trend for higher chromium compound level ($p=0.075$). Three patients had high silica load (311,760, 125,000 and 218,736 particles per mL of BAL fluid, respectively). Using a multivariable logistic regression analysis, the overall dust load was not associated with sarcoidosis after controlling for age, gender and smoking status (OR=3.78, 95%CI [0.29-50.0], $p=0.313$).

Dust exposure

The questionnaire analysis showed that the median dust exposure score of sarcoidosis patients (29.5 range [5-118]) was higher than that of healthy subjects (15.5 [0-75]) although this difference was not considered significant ($p=0.062$). The questionnaire score was not associated with the overall dust load ($p=0.122$) but was associated with the level of titanium compound ($p=0.046$) and to a lesser extent to the level of iron oxide ($p=0.056$). A trend was also observed with the silica level ($p=0.083$).

Occupation and mineralogical results

The three patients with high silica load were all construction workers. One healthy volunteer (1/20, 5%) and five sarcoidosis patients (25%) worked in the construction industry. In addition to these five sarcoidosis patients, four others had done so in the past and 16 in total had performed construction and demolition tasks informally. Among healthy subjects, one currently worked in construction and seven oth-

Table 1. Subjects' characteristics and dust load. Data are given as median (range), or n (%) unless otherwise stated

	Sarcoidosis patients (n=20)	Healthy volunteers (n=20)	P
Age, years median (min-max)	38.5 (25-48)	33.5 (20-47)	0.132
Male gender	14 (70)	14 (70)	1
Region of origin			0.009
Europe	11* (55)	19 † (95)	
Northern Africa	4 (20)	1 (5)	
Sub-Saharan Africa	2 (10)	0 (0)	
USA	2 (10)	0 (0)	
Middle East (Iraq)	1 (5)	0 (0)	
Smoking status (pack-years)			1
0-5	17 (85)	17 (85)	
5-10	2 (10)	2 (10)	
>10	1 (5)	1 (5)	
Sarcoidosis stage			-
I	6 (30)	-	
II	10 (50)	-	
III	2 (10)	-	
IV	2 (10)	-	
Building activity subscore	6.5 (0-40)	0 (0-27)	0.018
Overall dust load (particles/mL)	101,611 (43,347-1,247,038)	121,742 (57,213-260,417)	0.589
Dust exposure score	29.5 (5-118)	15.5 (0-75)	0.062
Specific dust load			
Aluminosilicate	56,437 (15,058-773,164)	63,889 (29,751-190,104)	0.530
Silica	15,655 (434-311,760)	12,839 (4,213-32,661)	0.328
Titanium compound	434 (434-37,411)	2,881 (434-46,967)	0.343
Titanium oxide	6,097 (434-68,743)	6,042 (434-57,613)	0.802
Iron oxide	434 (434-40,155)	3021 (434-18,519)	0.418
Steel	434 (434-13,749)	434 (434-3,841)	0.029
Chromium compound	434 (434-16,944)	434 (434-434)	0.075
Chromium oxide	434 (434-2,947)	434 (434-22,634)	0.913
Aluminium compound	434 (434-434)	434 (434-8,230)	0.152
Talc	434 (434-7,113)	434 (434-6,173)	0.970

* France 9, Portugal 2; † France 18, Italy 1;

ers had previously held activities in this sector. The median building activity sub-score, built from construction-related questions, was significantly higher for sarcoidosis patients (6.5 [0-40]) than for healthy subjects (0 [0-27], $p=0.018$).

In situ mineralogical analysis by optical microscopy

In the majority of cases (16/20), the pathologist's diagnosis matched the one suggested by the pulmonologist. Only one patient had his current occupation (construction worker) mentioned in the medical file. There was no mention of analysis under polarized light in any of the pathologists' reports. However, a re-examination of the histological slides

under polarized light revealed anisotropic particles for 13 subjects in the tissue harboring granuloma but only one within the granuloma.

DISCUSSION

Our study did not highlight any significant difference in the overall dust load between sarcoidosis patients and healthy volunteers. However, higher steel load and a trend for a higher level of chromium compounds were observed in sarcoidosis patients. Moreover, all three subjects with highest silica levels had a sarcoidosis diagnosis. Although airborne mineral dust exposure may be involved in the etiol-

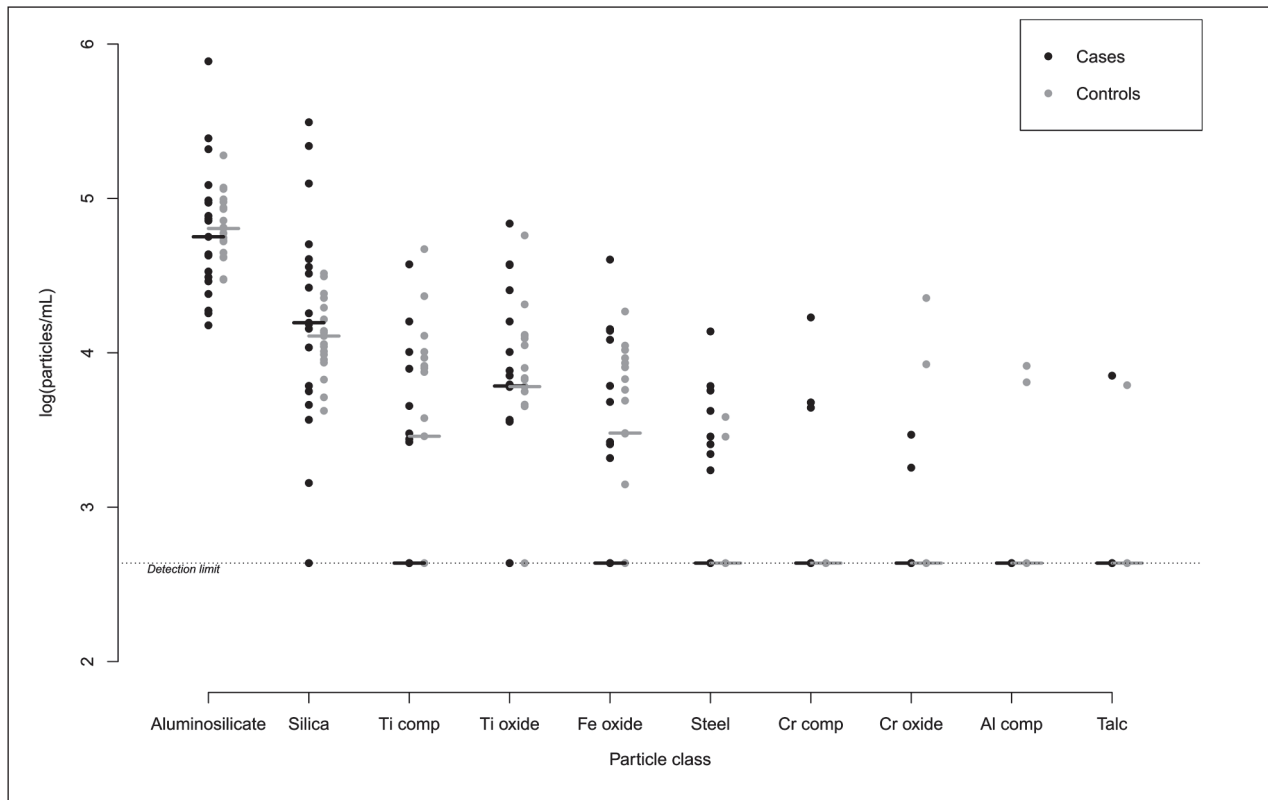


Fig. 2. Mineral content in sarcoidosis patients (black dots) and healthy volunteers (grey dots). Ti comp=titanium compound, Cr= chromium, Al=aluminium

ogy of several sarcoidosis cases in this study, absence of alveolar high overload dust could be explained in some cases by talc powder application (17). The questionnaire used in this study quantifies and classifies a subject's mineral exposome. Our results indicate that the dust exposure score calculated with this questionnaire is higher for sarcoidosis patients than for healthy participants, although the difference is slightly above significance ($p=0.062$). Since this questionnaire is used retrospectively with the knowledge of the presence/absence of the disease, a recall bias effect cannot be ruled out. However, the association between high questionnaire score and high level of titanium compound and to a lesser extent iron oxide and silica levels highlights the quality of this questionnaire and indicates that it could be useful as a surrogate marker of mineral exposure.

Interestingly, a majority (11/20) of sarcoidosis patients but only two healthy subjects were born outside France. A genetic cause seems unlikely because countries of origin are diverse (Table 1). These results

may rather reflect previous poorer healthcare and/or living conditions and more exposure-prone occupations of immigrants in France.

In this study, the building activity sub-score was significantly higher for sarcoidosis patients than for healthy subjects and the three patients with the highest silica loads were sarcoidosis patients working in construction. According to Hill's criteria (18), the causal link between these patients' building activities and their granulomatous disease may be hypothesized.

The present study suggests that the risks associated with silica exposure in the construction sector are underestimated both in the workplace and by pulmonologists. Indeed, although five patients were professional construction workers and 11 others had worked in construction or demolition activities prior to the study, this information was only passed on to the pathologist in one case. For most patients, the pulmonologist only mentioned that sarcoidosis was suspected; silicosis was not considered as a possible

diagnosis. Pathologists, unaware of the patient's possible exposure to silica, seldom search for birefringent particles under polarized light (the still recommended approach for detecting silica particles). As the boundaries between silicosis and other granuloma diseases remain poorly defined (19) and since analysis under polarized light is seldom performed, foreign body granulomatous reactions are thus often ascribed to sarcoidosis. However, the combination of questioning and mineralogical analysis would allow potential exposures to silica to be identified and would make the correct diagnosis easier to reach, especially for construction workers.

A clear limitation of this study is the sample size. However, although underpowered, this pilot study is unprecedented in its coupling of occupational and environmental questioning with the mineralogical analysis of BAL fluid. Construction workers are overrepresented among sarcoidosis patients and inhaled mineral dust could be involved in 8 of the 20 sarcoidosis cases. We recommend that patients presenting with a granulomatous disease should have their mineral exposome investigated by exhaustive questioning and mineralogical analysis. Systematic search of opaque or bi-refringent particles need to be mentioned by pathologists. Patients with high particle concentrations should be screened for hypersensitivity by skin or lymphocyte transformation tests. This approach should allow to better identify exposures and abnormal sensitivities, and to implement targeted protective measures.

These hypotheses need to be confirmed in larger samples of patients by combining mineralogical analysis and dust exposure questioning.

ACKNOWLEDGMENTS

The proofreading of this article was supported by the Bibliothèque Scientifique de l'Internat de Lyon and the Hospices Civils de Lyon and carried out by Paul Guerry (Green Grow Scientific).

Funding: This study was funded by the Saint Luc Association and Saint Gabriel dotation fund (Lyon, France) and the ERC Advanced Grant "Silicosis" (Centre for European Studies, Sciences-Po, Paris, France).

REFERENCES

- Gentry JT, Nitowsky HM, Michael M. Studies on the epidemiology of sarcoidosis in the United States: the relationship to soil areas and to urban-rural residence. *J Clin Invest* 1955 Dec;34(12):1839-56.
- Rafnsson V, Ingimarsson O, Hjalmarsson I, Gunnarsdottir H. Association between exposure to crystalline silica and risk of sarcoidosis. *Occup Environ Med* 1998 Oct;55(10):657-60.
- Vincent M, Lievre M. [Sarcoidosis and pulmonary dust exposure, a plausible pathogenic link]. *Rev Mal Respir*. 2002 Feb;19(1):103-4.
- Heffner DK. The cause of sarcoidosis: the Centurial enigma solved. *Ann Diagn Pathol*. 2007 Apr;11(2):142-52.
- Hunninghake GW, Costabel U, Ando M, et al. ATS/ERS/WASOG statement on sarcoidosis. American Thoracic Society/European Respiratory Society/World Association of Sarcoidosis and other Granulomatous Disorders. *Sarcoidosis Vasc Diffuse Lung Dis* 1999 Sep;16(2):149-73.
- Drent M, Bomans PH, Van Suylen RJ, Lamers RJ, Bast A, Wouters EF. Association of man-made mineral fibre exposure and sarcoidlike granulomas. *Respir Med* 2000 Aug;94(8):815-20.
- Deubelbeiss U, Gemperli A, Schindler C, Baty F, Brutsche MH. Prevalence of sarcoidosis in Switzerland is associated with environmental factors. *Eur Respir J* 2010 May;35(5):1088-97.
- Crowley LE, Herbert R, Moline JM, et al. "Sarcoid like" granulomatous pulmonary disease in World Trade Center disaster responders. *Am J Ind Med* 2011 Mar;54(3):175-84.
- Jordan HT, Stellman SD, Prezant D, Teirstein A, Osahan SS, Cone JE. Sarcoidosis diagnosed after September 11, 2001, among adults exposed to the World Trade Center disaster. *J Occup Environ Med* 2011 Sep;53(9):966-74.
- Newman LS. Beryllium disease and sarcoidosis: clinical and laboratory links. *Sarcoidosis* 1995 Mar;12(1):7-19.
- Redline S, Barna BP, Tomaszewski JF, Abraham JL. Granulomatous disease associated with pulmonary deposition of titanium. *Br J Ind Med* 1986 Oct;43(10):652-6.
- Humble S, Allan Tucker J, Boudreaux C, King JAC, Snell K. Titanium particles identified by energy-dispersive X-ray microanalysis within the lungs of a painter at autopsy. *Ultrastruct Pathol* 2003 Apr;27(2):127-9.
- De Vuyst P, Dumortier P, Schandené L, Estenne M, Verhest A, Yernault JC. Sarcoidlike lung granulomatosis induced by aluminum dusts. *Am Rev Respir Dis* 1987 Feb;135(2):493-7.
- Catinon M, Chemarin C, Assaad S, et al. Wire brushing wood furniture, granulomatosis and microscopic mineralogical analysis. *Sarcoidosis Vasc Diffuse Lung Dis* 2014 Oct 20;31(3):262-4.
- Dumortier P, De Vuyst P, Yernault JC. Non-fibrous inorganic particles in human bronchoalveolar lavage fluids. *Scanning Microsc* 1989 Dec;3(4):1207-16; discussion 1217-8.
- IARC Working Group on the Evaluation of Carcinogenic Risks to Humans. Silica dust, crystalline, in the form of quartz or cristobalite. In: IARC, editor. *Monographs on the evaluation of carcinogenic risks to humans. Volume 100 C (metals, arsenic, fibres and dust)*. Geneva: WHO Press, 2012 [Internet]. [cited 2017 Dec 4]. Available from: <https://monographs.iarc.fr/ENG/Monographs/vol100C/mono100C-14.pdf>
- Vincent M, Chemarin C, Peyrol S, Thivolet F, Champagnon B. [Use of talc and sarcoidosis - pathogenic role of cutaneous talc exposure in sarcoidosis]. *Rev Mal Respir* 2004 Sep;21(4 Pt 1):811-4.
- Hill AB. The environment and disease: Association or causation? *Proc R Soc Med*. 1965 May;58:295-300.
- Vincent M, Chemarin C, Cavalin C, Catinon M, Rosental P-A. From the definition of silicosis at the 1930 Johannesburg conference to the blurred boundaries between pneumoconioses, sarcoidosis, and pulmonary alveolar proteinosis (PAP). *Am J Ind Med* 2015 Nov;58 Suppl 1:S31-8.