

Supplemental Data

Figure S1:

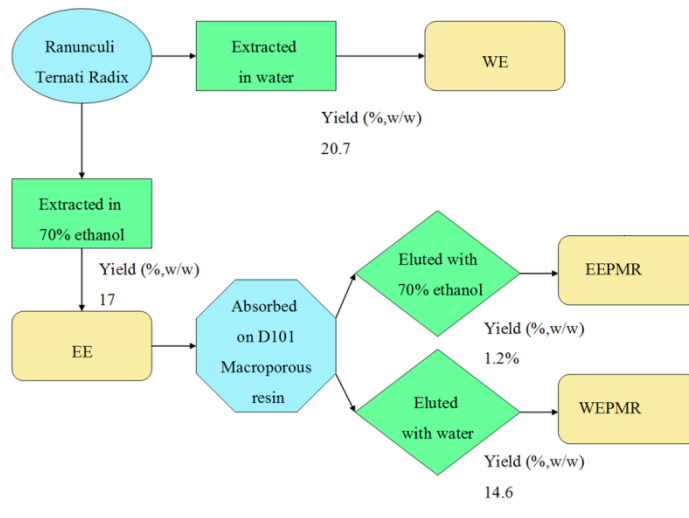


Fig.S1. Information of the preparation procedure of *Ranunculi Ternati Radix* extracts and fractions (yield=weight of dried extract or fraction/weight of crude herb)

Figure S2:

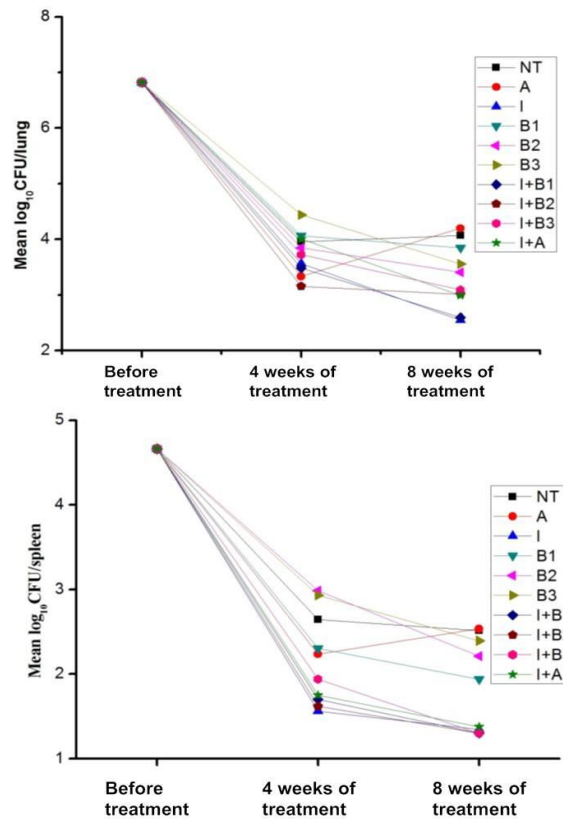


Fig.S2. Time curve of the sterilization speed in tuberculosis mice during treatment (n=10). 2 weeks after tuberculosis mouse model established, after 4weeks and 8 weeks of treatment.A,Lung; B, spleen.

Figure S3:

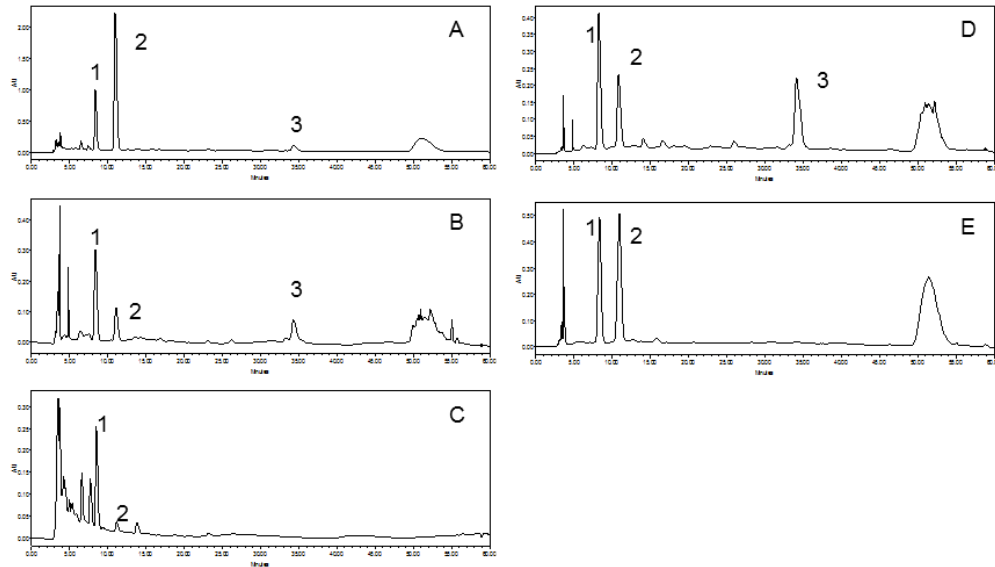


Fig.S3.Preliminary HPLC chromatograms (under the wavelength of292nm) ofWE (A), EE (B), WEPMR (C) , EEPMR (D) and Radix Ranunculi Ternati Capsules (E).

Figure S4:

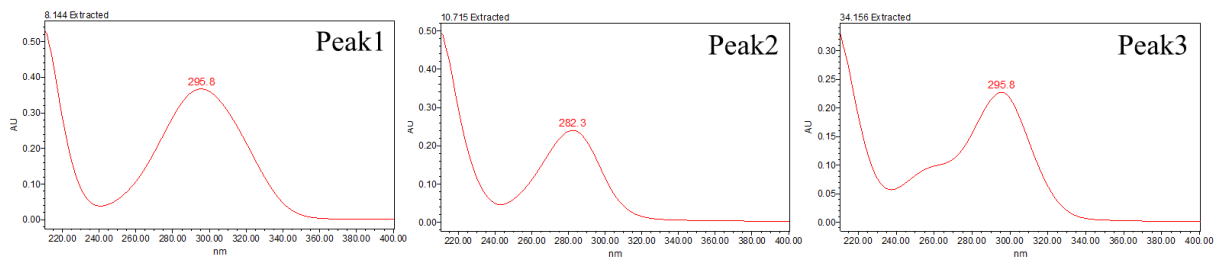


Fig.S4.UV spectral characteristics of the marked peaks in Fig.S3.

Table S1: Detail set of experimental mice

| Grouping | Group Number | Dose (mg/kg d) | Before Treatment (Number) | 4 weeks of treatment(Numbe r) | 8 weeks of treatment(Numbe r) |
|--|--------------|----------------|---------------------------|-------------------------------|-------------------------------|
| Control Group | 1 | | | 5 | 5 |
| Model Group | NT | | 5 | 10 | 10 |
| Radix Ranunculi Ternati Capsules Group | A | 1240 | | 10 | 10 |
| Isoniazid Group | I | 25 | | 10 | 10 |
| High dose of EEPMR Group | B1 | 400 | | 10 | 10 |
| Medium dose of EEPMR Group | B2 | 200 | | 10 | 10 |
| Low dose of EEPMR Group | B3 | 100 | | 10 | 10 |
| Isoniazid + High dose of EEPMR Group | I+B1 | 25 + 400 | | 10 | 10 |
| Isoniazid + Medium dose of EEPMR Group | I+B2 | 25 + 200 | | 10 | 10 |
| Isoniazid + Low dose of EEPMR Group | I+B3 | 25 + 100 | | 10 | 10 |
| Isoniazid + Radix Ranunculi Ternati Capsules Group | I+A | 25 + 1240 | | 10 | 10 |